

# 460SJ

## TELESCOPIC BOOM LIFT

BOOM LIFT



### KEY SPECS

**Platform Height**  
46-ft / 14.05-m

**Horizontal Outreach**  
39-ft / 12-m

**Drive Speed**  
4.25 mph / 6.8 km/h

**Platform Capacity**  
600-lb / 272-kg

### KEY FEATURES

- Delivers improved multifunction capability for increased productivity.
- Utilizes a new hood design to provide more durability and serviceability.
- Features a 600-lb platform capacity to take everything needed to the job site.
- Maximize horizontal reach with a straight boom.

### ACCESSORIES & OPTIONS

- 1/2-in Air Line to Platform
- AC Generator, 2500W or 4000W
- Accessory Packages
  - SkyPower® Package
  - SkyWelder® Package
  - SkyGlazier® Package
- Arctic Package<sup>1</sup>
- Bolt On Fall Arrest System
- Cold Weather Package<sup>2</sup>
- Hostile Environment Package<sup>3</sup>
- Light Packages
- Platform Mesh to Mid or Top Rail
- Aluminum or Plastic Platforms
  - Drop Bar, 30 x 36-in, 30 x 60-in, 36 x 72-in, 36 x 96-in
  - Fall Arrest, Rear Entry, 36 x 72-in, 36 x 96-in
  - Inward Self-Closing Swing Gate, 30 x 60-in, 36 x 72-in, 36 x 96-in
- Tri-Entry, Drop Bar or Swing Gate, 36 x 72-in, 36 x 96-in
- SkySense® Enhanced Detection System
- Soft Touch System

### STANDARD SPECIFICATIONS

#### Performance

Platform Height	46-ft / 14.05-m
Horizontal Outreach	39-ft / 12-m
Swing	360 Degrees Continuous
Platform Capacity (Unrestricted)	600-lb / 272-kg
Platform Rotator	180 Degrees Hydraulic
Jib	6-ft / 1.83-m
Range of Articulation	130 Degrees (+70, -60)
Weight*	16,600-lb / 7,530-kg
Max. Ground Bearing Pressure	60 psi / 4.76 kg/cm <sup>2</sup>
Drive Speed	4.25 mph / 6.8 km/h
Gradeability	45%
Tilt Cut Out	5 Degrees
Turning Radius (Inside/Outside)	6-ft 6.9-in (2.0-m) / 15-ft 10.5-in (4.8-m)

#### Engine

Dual Fuel – Kubota WG2503	61 hp / 45.5 kW
Diesel Fuel – Deutz D2.9L4 Tier 4 Final	49 hp / 36.4 kW
Fuel Tank Capacity	22 gal / 83.3 L

#### Tires

Standard	Foam Filled, 12x16.5
Optional	Foam Filled Non-Marking, 12x16.5
	Foam Filled, 14x17.5
	Foam Filled, Turf & Sand, 33/16LLx16.1

#### Hydraulic System

Hydraulic Reservoir	36 gal / 136.27 L
Auxiliary Power	12V DC

### STANDARD FEATURES

- 5 Degree Tilt Alarm/Indicator Light
- 12V-DC Auxiliary Power
- 110V-AC Receptacle in the Platform
- 180 Degree Hydraulic Platform Rotator
- Center Storage Tray
- ClearSky Smart Fleet™ Hardware (CS550)
- Control ADE® System
- Four-Wheel Hydrostatic Drive
- Glow Plugs (Diesel Engines)
- Horn
- Hourmeter
- Improved Multi-Function Controls
- Interactive Display at Ground Controls
- Lifting/Tie Down Lugs
- LED Motion / Amber Beacon (CS550)
- Motion Alarm
- Oscillating Axle
- Platform Console Machine Status Light Panel\*\*
- Proportional Controls
- Rapid Replaceable Platform with Self-Closing Gate
- Reduced Time to Full Height
- SkyGuard SkyLine™
- Swing-Out Engine Tray
- USB-A and USB-C Charger

\*Certain Options or Country Standards Increase Weight.

\*\*Provides Indicator Lights at Platform Control Console for System Distress, Low Fuel, Degree Tilt Light and Foot Switch Status.

1. Includes arctic hydraulic hoses (drive and steer only) and main boom cable, arctic hydraulic oil, extreme cold engine oil, fuel conditioner, engine block heater, battery blanket, glow plugs, hydraulic tank heater, and oversized footswitch.

2. Includes battery blanket, hydraulic tank heater, block heater.

3. Includes console cover, boom wipers and cylinder bellows.

Note: Some options may increase lead time, and some option combinations may not be available. Additional accessories and options available via JLG Aftermarket.

# 460SJ

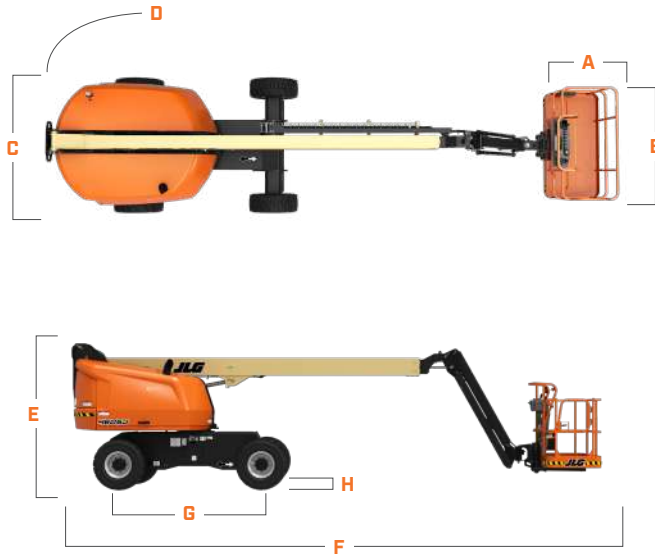
TELESCOPIC BOOM LIFT

BOOM LIFT



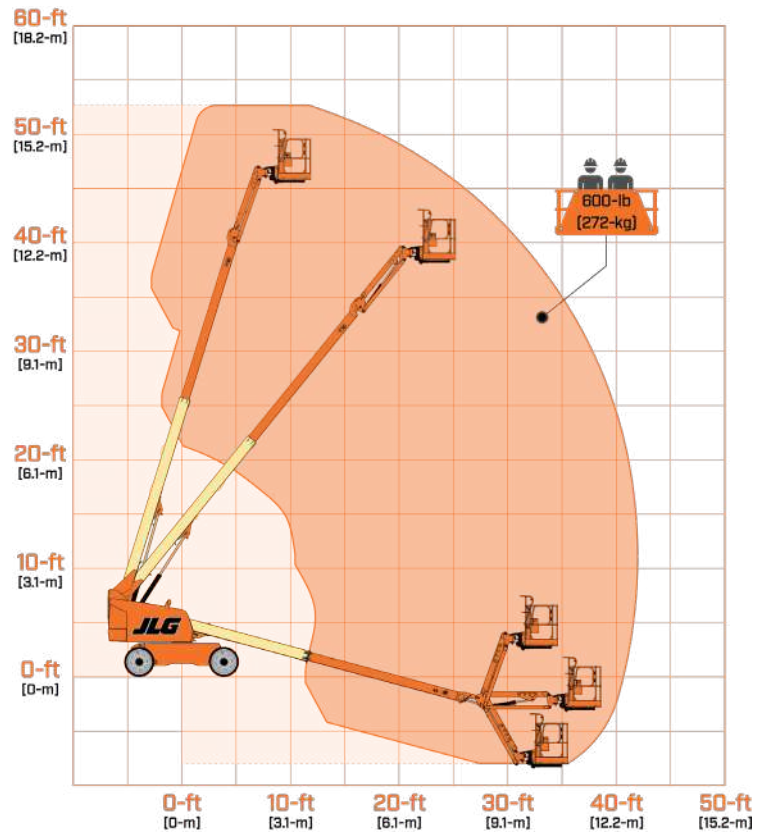
## DIMENSIONS

All dimensions are approximate



A.	Platform Width	36-in / 0.91-m
B.	Platform Length	96-in / 2.44-m
C.	Machine Width	7-ft 6.8-in / 2.31-m
D.	Tailswing	2-ft 10-in / 86-cm
E.	Machine Height	8-ft 1-in / 2.47-m
F.	Machine Length	24-ft 11-in / 7.6-m
G.	Wheelbase	7-ft 9.5-in / 2.37-m
H.	Ground Clearance	12.1-in / 31-cm

## REACH DIAGRAM



We provide coverage for one (1) full year, and cover all specified major structural components for five (5) years. Due to continuous product improvements, we reserve the right to make specification and/or equipment changes without prior notification. This machine meets or exceeds applicable ANSI and CSA requirements based on machine configuration as originally manufactured for intended applications. Please reference the serial number plate on the machine for additional information.

Part No. 3131046 | R0825\_02



**JLG INDUSTRIES, INC.**  
Toll-free US 877-JLG-LIFT  
[JLG.com](http://JLG.com)

An Oshkosh Corporation Business